



AN ISO **9001:2015** CERTIFIED COMPANY



**CRAFTING  
PRECISION, SHAPING  
INNOVATION**



[www.rsiplgroup.com](http://www.rsiplgroup.com)

Your Partner in Fabrication Engineering



## ABOUT

### **RAHUL STEEL INDIA PVT. LTD.**

Rahul Steel India Private Limited stands at the forefront of industrial fabrication, providing a comprehensive range of services tailored to meet the demands of various sectors, including construction, infrastructure, and manufacturing.

## Expertise in Structure Fabrication and Complete Turnkey Solutions

---

Rahul Steel India Private Limited stands out as a leading manufacturer of high-quality grating and cable tray solutions. With its corporate base in India, the company has carved a niche in the global market, thanks to its commitment to innovation, quality, and customer satisfaction.

As a renowned structure fabricator, we pride ourselves on our ability to deliver customized, robust solutions that align with our clients' specific requirements.



## ABOUT RSIPL



## AN ESTABLISHED BRAND NAME **SINCE 10+ YEARS**

Rahul Steel India Pvt. Ltd. is an ISO 9001-2015 certified company, takes this opportunity to introduce ourselves as one of the leading manufacturers of Cable Trays, Grating, Railings, Structure Fabrications, Ladders & Turnkey Projects Solutions for 10+ years.

We are reputed as Cable Tray, Ladders , Hand Rails & Gratings Manufacturers & leading industry with superior quality, time bound dispatches and systematic approach.

- 
- ❖ 24X7 Customer Support
  - ❖ Innovative Solutions
  - ❖ Own Mfg. Facility
  - ❖ Long-Term Reliability
  - ❖ Precision Engineering
  - ❖ Stringent Quality Control



## Our Mission

Our mission is to be the leading manufacturer of Gratings & Cable Trays in the world. This will be achieved by building the best products and cost effective solutions to our valuable customers. We are committed to our core values.



## Our Vision

RSIPL is dedicated to becoming one of the world's leaders in the industry with a focus on based products by strongly supporting our customers, by continuously developing our team, and by diligently enhancing our manufacturing technologies



### **MR. D.R. CHOUDHARY**

Having A Great Experience Since 10+ Years of Manufacturing & Fabrication Industries. Expertise for projects Co-ordinations and providing Complete Solutions & guidance. Experience in Sales & Management.



## **OUR TEAM & MANAGEMENT**



### **MR. RAJ KUMAR**

A team player with proven track record of leading diverse members for long term goals. With experience of more than 20+ years in banking, trading of minerals, export of minerals, distribution in telecom, supply of steel, steel structure, fabrication. Strong believer of equity and commitments.

Dedication Towards Premium  
Quality Products



# INDUSTRIAL GRATINGS

A Leading Brand Name in Mfg. Premium Range of **Gratings** in India.



## METAL GRATINGS

We are a known Manufacturer, Supplier and Exporter of widely applauded Metal Grating . This is made using premium grade raw material and latest machines in a way to uphold our quality standards. Thus, it is extensively appreciated and demanded for its durability, seamless quality and perfect finish.

Industrial Gratings Manufacturer, Custom Gratings, Stainless Steel Grating Price, Electroforged Gratings, Aluminum Gratings, Galvanized Gratings, MS Painted Gratings, Bar Gratings Exporter In India.



## TYEPS OF GRATINGS

- |   |   |
|---|---|
| 01. <b>SS GRATINGS</b><br>We Have a wide & Customized Range of Products.. | 04. <b>FRP GRATINGS</b><br>We Have a wide & Customized Range of Products..    |
| 02. <b>MS GRATINGS</b><br>We Have a wide & Customized Range of Products.. | 05. <b>FORGED GRATINGS</b><br>We Have a wide & Customized Range of Products.. |
| 03. <b>GI GRATINGS</b><br>We Have a wide & Customized Range of Products.. | 06. <b>BAR GRATINGS</b><br>We Have a wide & Customized Range of Products..    |

The grating panels are available in standard sizes and meshes that are preferred by the clients worldwide. RSIPL supplies electro forged grating panels, cut-to-size or custom fabricated electro forged gratings, circular gratings, heavy duty gully gratings and stair treads with required fixing clamps in Mild Steel and Stainless Steel. These gratings can be supplied in self-colour, hot dip galvanized, painted and electro-polished surface finish. The gratings are offered with plain as well as serrated bearing bars.







# INDUSTRIAL CABLE TRAY

A Leading Brand Name in Mfg. Premium Range of **Cable Trays** in India.

## CABLE TRAYS MFG.

We are a known as one of leading fabricators of cable management systems. RSIPL supplies Perforated Cable Trays and Ladder Trays in Mild Steel, Stainless Steel, Aluminium and FR Grades. The trays offered by us are manufactured using superior quality raw material, which is sourced from the reliable vendors of the market

Cable trays are available in different sizes as per the standard requirements of customer and up to 6 metres length. RSIPL also supplies wire mesh trays using wire rods with diameter up to 6 millimetres.

## **TYEPS OF CABLE TRAYS**

- |  |   |
|--|---|
| 01. <b>PERFORATED TRAYS</b><br>We Have a wide & Customized Range of Products.. | 04. <b>FRP TRAYS</b><br>We Have a wide & Customized Range of Products..       |
| 02. <b>LADDER TRAYS</b><br>We Have a wide & Customized Range of Products..     | 05. <b>RACEWAY TRAYS</b><br>We Have a wide & Customized Range of Products..   |
| 03. <b>WIRE MESH TRAYS</b><br>We Have a wide & Customized Range of Products..  | 06. <b>CABLE TRAY BEND</b><br>We Have a wide & Customized Range of Products.. |

Accessories available for perforated as well as ladder type cable trays are horizontal bends, vertical bends, inside bends, outside bends, reducers and tees. RSIPL also supplies cable tray support system which includes strut channels, threaded rods, structural sections, cantilever arms, hardware etc. Cable trays are available in different finishes like self-color, pre-galvanized (GI), hot dip galvanized (HDG), powder coated and painted.





**RAILINGS  
TURNKEY  
SOLUTIONS**

A Leading Brand Name in Mfg. Premium Range of **HAND RAILS** in India.



## RAILINGS / HAND RAILS TURNKEY PROJECTS

RSIPL is a leading provider of pre-engineered railing solutions and systems for Residential, Industrial & Commercial Projects. Specializing in the design, engineering, fabrication, and installation of Stainless steel, Mild Steel and Glass railings, we have built a reputation for delivering high-quality, durable products that meet the specific needs of each project.

railing systems offer innovative solutions for architectural designs, featuring a variety of baluster shapes and infill materials tailored to meet different aesthetic and functional needs.



## TYEPS OF HAND RAILS

- |  |  |
|--|--|
| 01. <b>MS HAND RAILS</b><br>We Have a wide & Customized Range of Products..    | 04. <b>INDUSTRIAL RAILS</b><br>We Have a wide & Customized Range of Products.. |
| 02. <b>SS HAND RAILS</b><br>We Have a wide & Customized Range of Products..    | 05. <b>COMMERCIAL RAILS</b><br>We Have a wide & Customized Range of Products.. |
| 03. <b>GLASS HAND RAILS</b><br>We Have a wide & Customized Range of Products.. | 06. <b>PLATFORM RAILS</b><br>We Have a wide & Customized Range of Products..   |

We're committed to a smooth and well-thought-out process from your first consultation to the final installation. Our specialty is creating stylish custom solutions that tackle the complex needs of projects. We're all about efficient project management, ensuring you're confident every step of the way. Whether opting for economical models with zinc fittings, sleek glass-only setups without visible posts, or robust rectangular balusters for rooftop wind resistance, we provide versatile, durable handrail options for every setting...





# INDUSTRIAL LADDERS

A Leading Brand Name in Mfg. Premium Range of **INDUSTRIAL LADDERS** in India.



## INDUSTRIAL LADDERS

We are the leading manufacturers of Aluminium Ladders, FRP Ladders, Aluminium Scaffold Tower Ladders. We supply all types of commercial Ladders, Industrial Ladders & Aluminium Scaffoldings in various type of Industries & corporate sectors in all over India & Globally. Our heavy-duty ladders are very effective and according to the customer need.

RSIPL commits Quality Products and our Ladders are highly acknowledged for their durability and longer functional life.

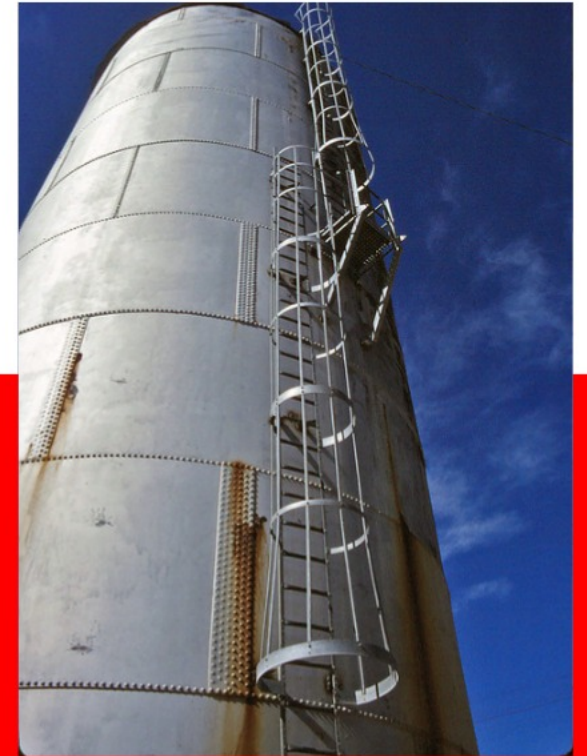


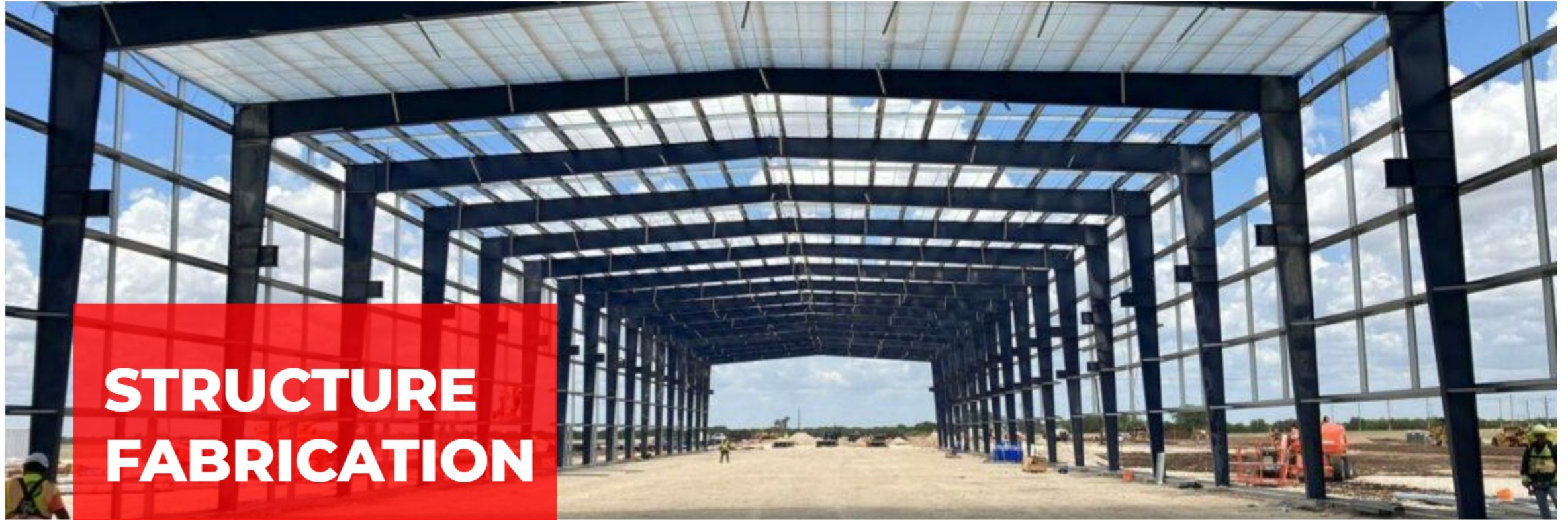
## TYEPS OF LADDERS

- |   |  |
|---|--|
| 01. <b>SCAFFOLD LADDERS</b><br>We Have a wide & Customized Range of Products..  | 04. <b>FRP LADDERS</b><br>We Have a wide & Customized Range of Products..  |
| 02. <b>EXTENSION LADDERS</b><br>We Have a wide & Customized Range of Products.. | 05. <b>STEP TROLLEY</b><br>We Have a wide & Customized Range of Products.. |
| 03. <b>PLATFORM LADDERS</b><br>We Have a wide & Customized Range of Products..  | 06. <b>TOWER LADDER</b><br>We Have a wide & Customized Range of Products.. |



We Designed ladders are mainly use in various types of Industries like Pharmaceutical Companies, Chemical Industries, Textile Mill, Petroleum Co., Information & Technology, Bulk Drugs, Sugar Factory, Steel Plant, Power plant, Food Processing unit, Engineering Shop, Agro chemical & fertilizer industries, Ceramic, Paper, Printing, Laminates, Plastics Processing, etc.





# STRUCTURE FABRICATION

A Leading Brand Name in Mfg. Premium Range of **STRUCTURE FABRICATION** in India.

## STRUCTURE FABRICATION

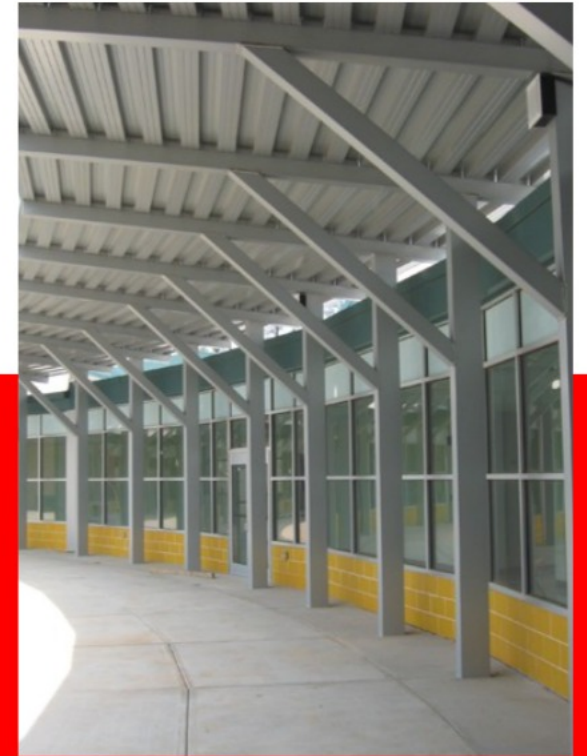
Structural fabrication refers to the cutting, bending, and assembling of raw materials generally steel to create finished products, systems, and structures. It does not include any operations focused on strengthening or repairing the material. Below, we provide some examples of typical structural fabrication projects.

We are specialize in Structure and Custom Fabrication Work all over India with the commitments of on-time Executions and high Quality guarnateed.

## WE ARE DEALING IN:

- |  |  |
|--|--|
| 01. <b>BUILT-UP STRUCTURE</b><br>We Have a wide & Customized Range of Products.. | 04. <b>TROLLEYS</b><br>We Have a wide & Customized Range of Products..         |
| 02. <b>STEEL BRIDGE</b><br>We Have a wide & Customized Range of Products..       | 05. <b>ENGG. STRUCTURES</b><br>We Have a wide & Customized Range of Products.. |
| 03. <b>STORAGE EQUIPMENT</b><br>We Have a wide & Customized Range of Products..  | 06. <b>ARCHITECTURAL</b><br>We Have a wide & Customized Range of Products..    |

Structural fabrication projects are highly varied. They can range from buildings to bridges to other large structures. One of the most commonly used materials in these projects is structural steel, which exhibits many beneficial properties that make it ideal for use in structural applications. Some examples of typical structural steel fabrication projects include: Industrial, Residential, Commercial, Architectural, Transportation etc areas.





**MS/SS  
TURNKEY  
PROJECTS**

A Leading Brand Name in Premium Range of **SS & MS TURNKEY PROJECTS SERVICES COMPANY** in India.



## SS & MS TURNKEY PROJECTS

From Concept to Commissioning, RSIPL is expertise to provide turnkey manufacturing, erection services enabling seamless coordination of manufacturing activities, from the technical, engineering, manufacturing, assembly and support skills to final validation, testing, and commissioning.

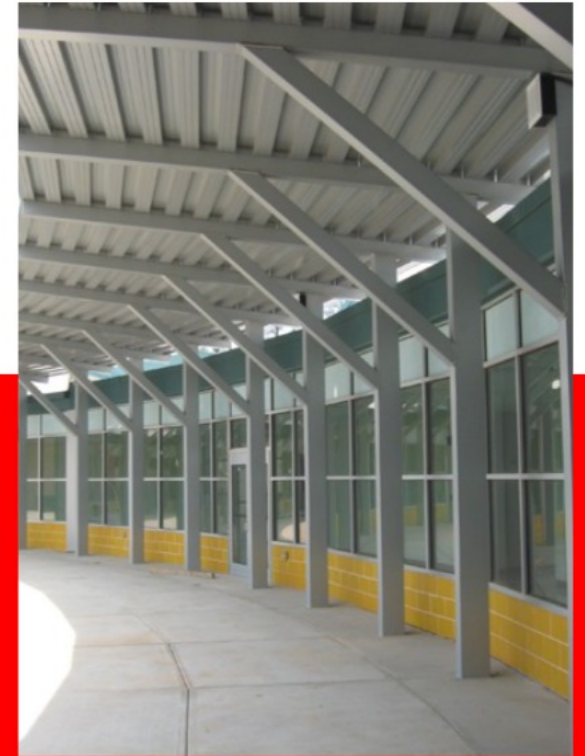
We have team of professionals & qualified Engineers for Making your Projects with Customized Solution by Providing Excellent Quality Work.



## WE ARE DEALING IN:

- |   |  |
|---|--|
| 01. <b>ROAD BARRIERS</b><br>We Have a wide & Customized Range of Products..     | 04. <b>DUCTING SYSTEM</b><br>We Have a wide & Customized Range of Products..     |
| 02. <b>CHAINLINK FENCE</b><br>We Have a wide & Customized Range of Products..   | 05. <b>CUSTOM FABRICATION</b><br>We Have a wide & Customized Range of Products.. |
| 03. <b>PIPELINE PROJECTS</b><br>We Have a wide & Customized Range of Products.. | 06. <b>ON-SITE WORK</b><br>We Have a wide & Customized Range of Products..       |

We offers complete solutions to the customer enabling them to focus on their organization strategic goals. We undertake a single source responsibility for the project through co-ordination of all the departments



# OUR QUALITY & INFRASTRUCTURE

Our Manufacturing Unit Consist Of Our State-Of-Art Technology, Fully Equipped infrastructure & Experienced professional Team..



**OWN MFG. UNIT**



**R&D DEPARTMENT**



**PRODUCTION**



**SERVICES DEPT.**



**SALES & PURCHASE**



**QUALITY CONTROL**



**TRANSPORTATION**



**INSTALLATION**





## QUALITY COMMITMENTS

---

We Utilize Quality Management Systems That Employ A Number Of Very Effective Tools. Our In-House Laboratory Is Equipped With A Large Range Of The Latest Testing Equipment, Allowing Us To Use Various Procedures To Monitor And Check The Quality Of Our Materials.

Quality Is Our Highest Priority. We Learned Long Ago That The Key To Success Is To Provide Customers With A Higher Level Of Quality Than They Expect.

The implemented Quality System is based on rules and practices established and agreed with the entire organization, formalized in specific documents and procedures that must guide each company function in carrying out its activities, in order to guarantee the following objectives:

- Increase the quality of the product/service provided;
- Cost optimization;
- Carrying out the process in compliance with current industry regulations and with regard to safety, ethics and ecology;
- Raise the culture of quality in the operational staff, involving them in the knowledge of the importance of their business;
- Continuous adaptation of production capacity and flexibility, in order to maintain a high level of product competitiveness and an optimal quality/price ratio.

Our infrastructure is a judicious combination of sophisticated technology and industrious professionals. Spread over a sprawling area, our infrastructure is divided into manufacturing unit, quality testing unit, and research & development unit. Our manufacturing unit is fitted with all the machines that are required for the production of hydraulic surface grinding machines. Our processes and systems are systematically planned right from design, planning, engineering, procurement and construction services to support the execution of our infrastructure projects.

We are backed with proficient engineers who are well versed with modern methodology and techniques to deliver specific and high profile requirements of the projects.

### **LIST OF MACHINERY**

- Electro-forged Gratings Welding Machine
- Gratings Cutting Machines
- Rod Twisting / Straightening & Cutting Machine
- Water Chilling Unit
- Water Chilling Tower
- Sharpening Machines
- Welding Machines
- Cutting Tools
- Grinding Tools
- Drilling Machines
- Testing Equipment
- Laser Marking Machines



# SATISFIED CLIENTS





# Complete Sustainable Solutions for Your Projects

## REGD. ADDRESS :

Shed no. 49, Ved Industrial Park, 100ft kathwada  
Bhulavdi Road, behind Shreenathi Estate, Kathwada,  
Ahmedabad- 382430, Gujarat (India).

CALL US ON

## SALES & MARKETING

+91 9981848646 | +91 7650010000

## OUR FACTORY :

Survey No. 1576, Plot No.4, Tejas Industrial Park,  
Kuha Bhavda Road, Indore Highway, Bhavda,  
Ahmedabad- 382433, Gujarat (India).

## MAIL US ON :

info@rsiplgroup.com | sales@rsiplgroup.com

FOLLOW US ON:



Visit our Site: [www.rsiplgroup.com](http://www.rsiplgroup.com)